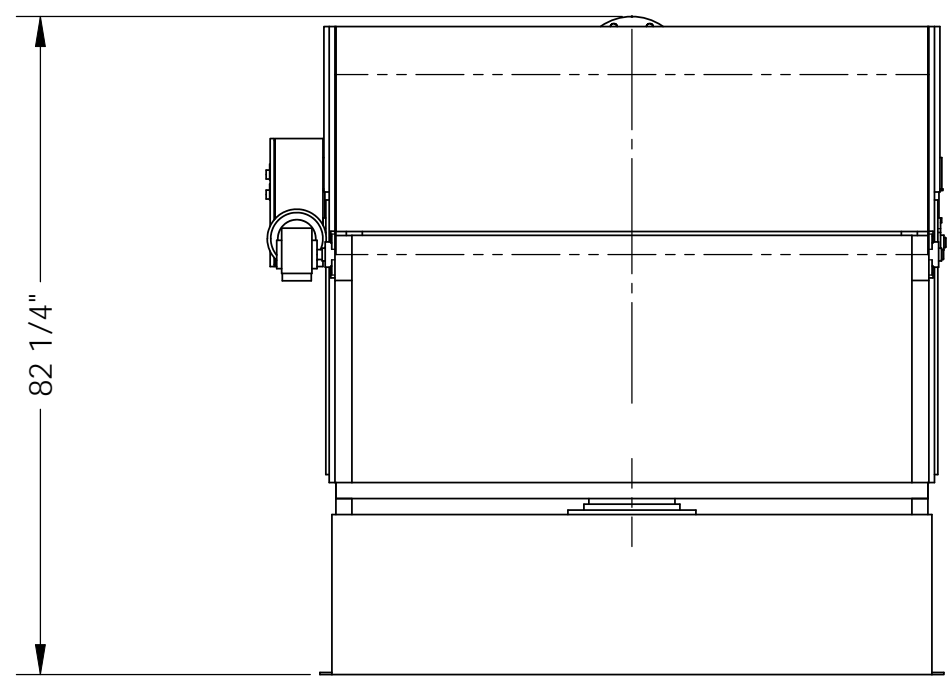
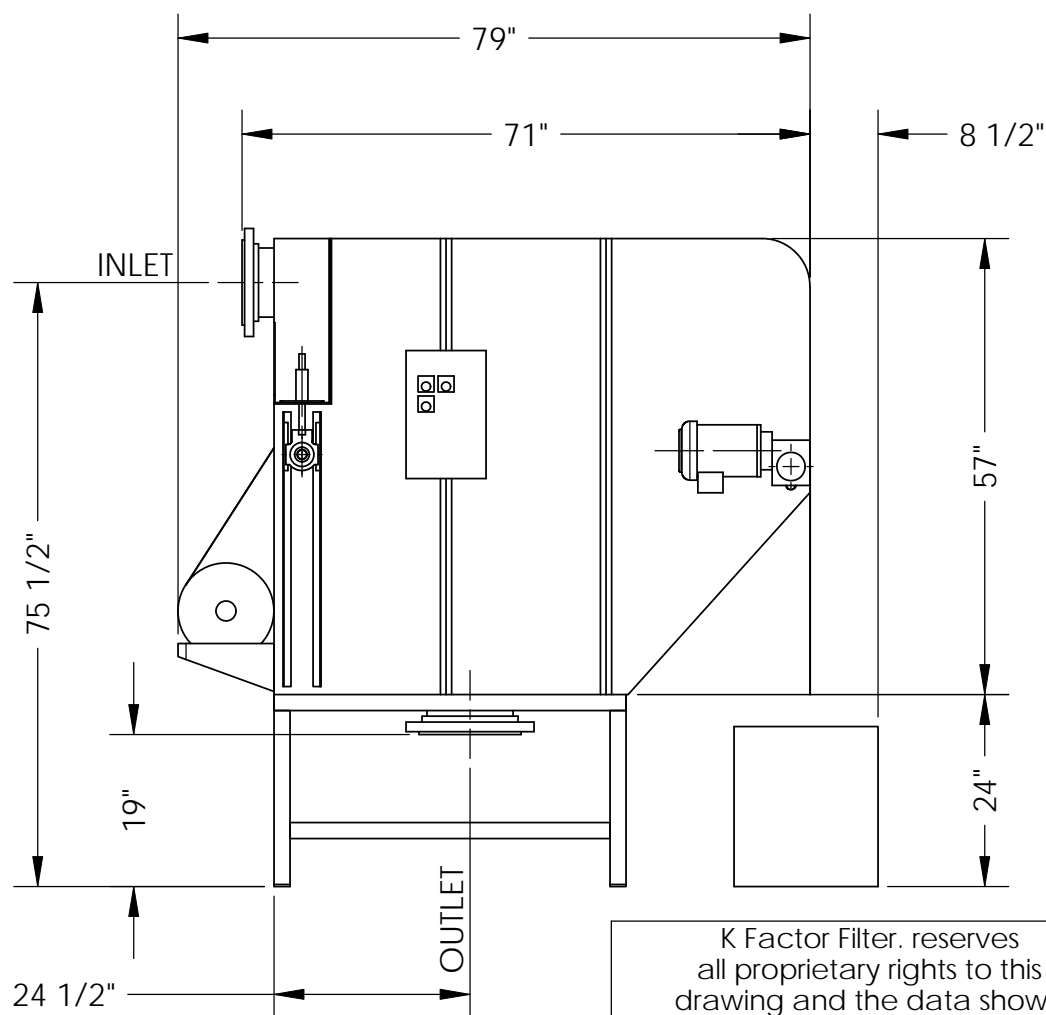
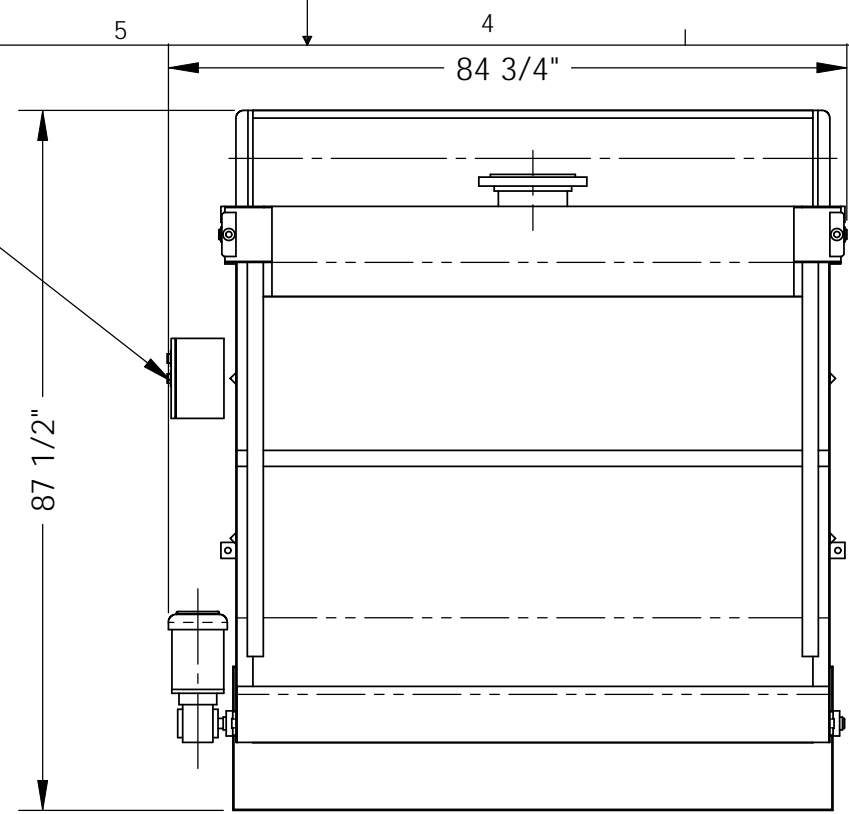


ELECTRICAL CONTROL

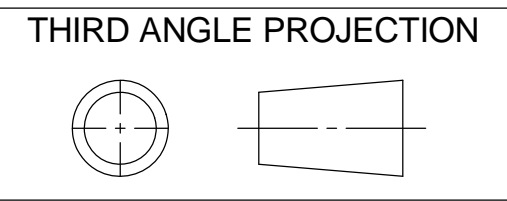


### SPECIFICATIONS

- FLOW:-** 1100 US GPM
- MICRON:-** 25 MICRON
- INLET SIZE:-** 8" 150# ANSI FLANGE
- OUTLET SIZE:-** 10" 150# ANSI FLANGE
- ELECTRICAL CONNECTION:-** 110VAC 1PH 60Hz
- CONSTRUCTION MATERIALS.**

- HOUSING:-** CARBON STEEL
- WHEELS:-** ALUMINUM
- SEALS:-** BUNA
- BELTING:-** 304 STAINLESS STEEL
- MEDIA BIN:-** (OPTIONAL) CARBON STEEL
- STAND:-** (OPTIONAL) CARBON STEEL

K Factor Filter. reserves all proprietary rights to this drawing and the data shown therein. This drawing is submitted in confidence and must not be used or reproduced without prior written consent or permission.



DO NOT SCALE DRAWING

#### TOLERANCES

- UNLESS OTHERWISE NOTED
- DECIMALS 2 PLACE  $\pm 0.015$
- DECIMALS 3 PLACE  $\pm 0.005$
- DECIMALS 4 PLACE  $\pm 0.0005$
- FRACTIONAL  $\pm 1/32$
- ANGLES  $\pm 1^\circ$
- DIM IN [ ] ARE mm REF.
- DEBURR ALL PARTS AND BREAK SHARP EDGES

DRAWN	JFC DESIGNS	JAN 2010
CHECKED	JOHN COUSINS	-
Q.A.	-	-
MFG.	-	-
APPROVAL	-	-
IF IN DOUBT-ASK		



TITLE:			
K-1100			
MATERIAL:-			
FINISH:-			
SIZE	MASS	DWG. NO.	REV
<b>B</b>	LBS	<b>K-1100A01</b>	<b>A</b>
SCALE: 1:24		SHEET 1 OF 1	