

MACHINING LIMITS TO
BE ± .025mm UNLESS
OTHERWISE STATED

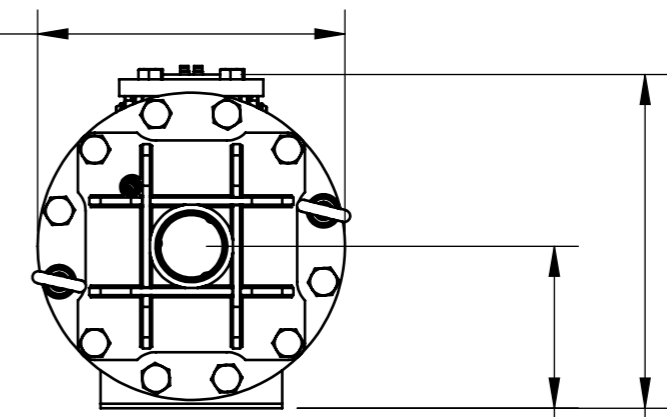
ISSUE NO.	1	2	3	4	5	6	7	8
DATE	04 JUL 05	16 FEB 06	15 MAY 06	16 OCT 07	08 NOV 07	25 FEB 08	02 JUL 08	08 OCT 09

THIRD ANGLE PROJECTION

ISSUE CONTROL NOTES

- ISSUE 1 ORIGINAL
- ISSUE 2 WALL MOUNT BRACKETS ADDED
- ISSUE 3 EXTENDED INLET NIPPLE
- ISSUE 4 CONNECTIONS HARMONISED FOR MANIFOLD MOUNTING
- ISSUE 5 CONNECTION DIMENSIONS ADDED
- ISSUE 6 BRACKET LENGTH REDUCED TO SUIT MANIFOLD CHANNEL
- ISSUE 7 TOP STUB PIECE INCREASED TO ACCOMODATE SPRING CORES
- ISSUE 8 BODY LENGTH EXTENDED BY +30mm
3" THREAD INLET CHANGED TO VICTAULIC

OVERALL WIDTH
Ø 406.40 [16"]



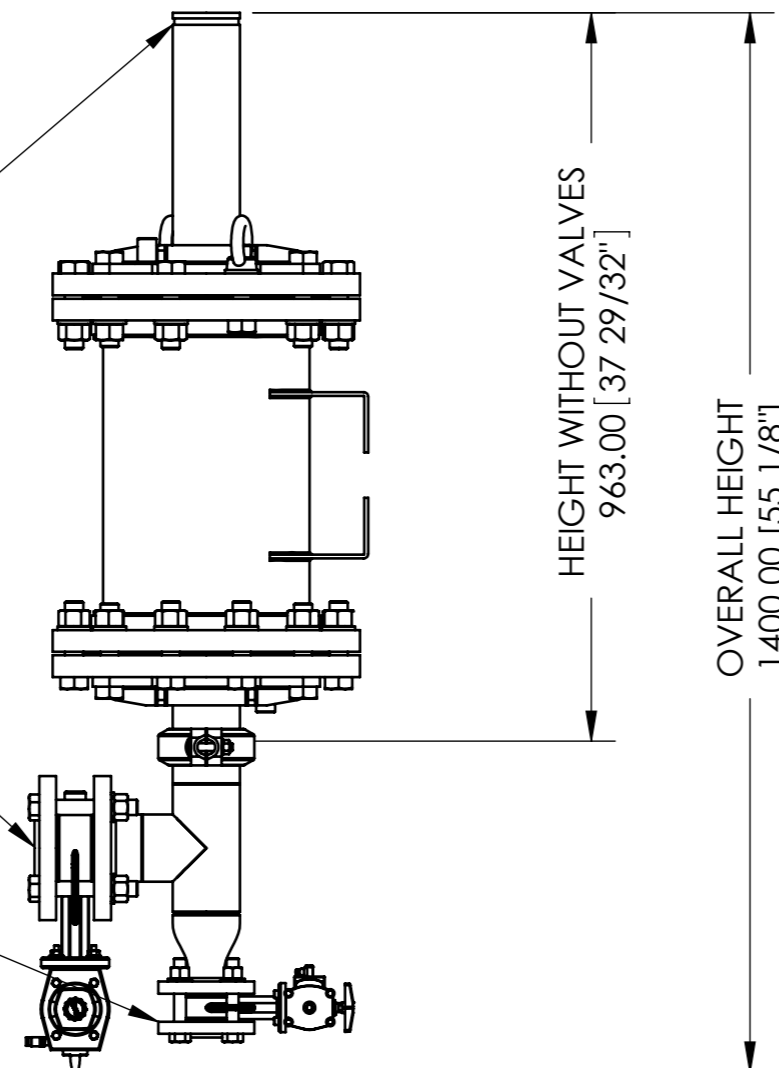
214.00 [8 7/16"]
441.22 [17 3/8"]

INLET CONNECTION
3" VICTAULIC GROOVE

ADAPTOR PIECES
AVAILABLE FOR
THREAD OR FLANGE

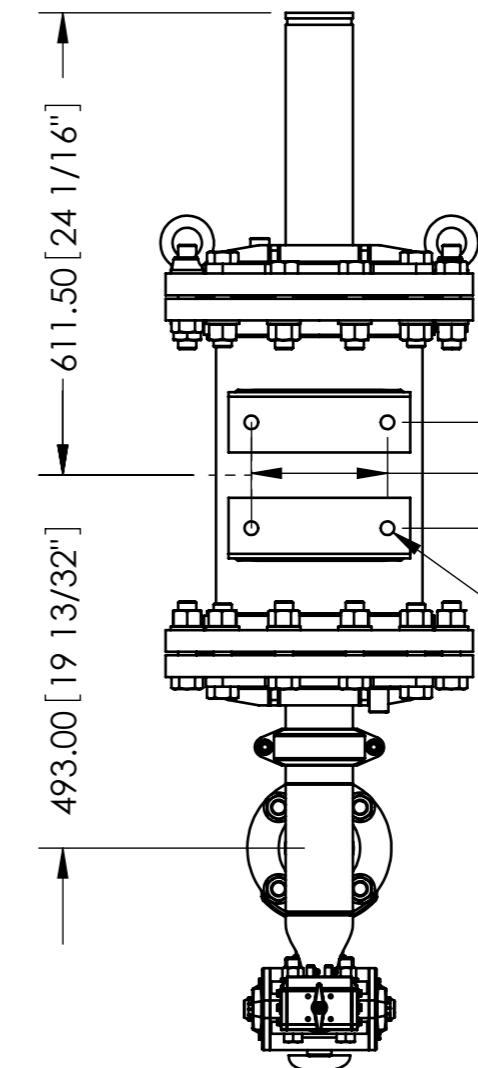
DISCHARGE CONNECTION
3" NPT FEMALE
THREADED FLANGE

PURGE CONNECTION
1½" NPT FEMALE
THREADED FLANGE



HEIGHT WITHOUT VALVES
963.00 [37 29/32"]

OVERALL HEIGHT
1400.00 [55 1/8"]



611.50 [24 1/16"]

493.00 [19 13/32"]

180.00 [7 3/32"]

140.00 [5 1/2"]

4 OFF MOUNT BOLT
HOLES Ø 18.00 [23/32"]

ALL DIMENSIONS ARE IN MILLIMETERS [INCHES]



TITLE **26 CORE AUTOMATIC MAGNETIC SEPARATOR
GENERAL LAYOUT**

MATL:	ST STEEL 316L	DRAWN:	WFSH
SPECN:		CHECKED:	WFSH
No OFF:		DATE:	04 JUL 05

250 GPM